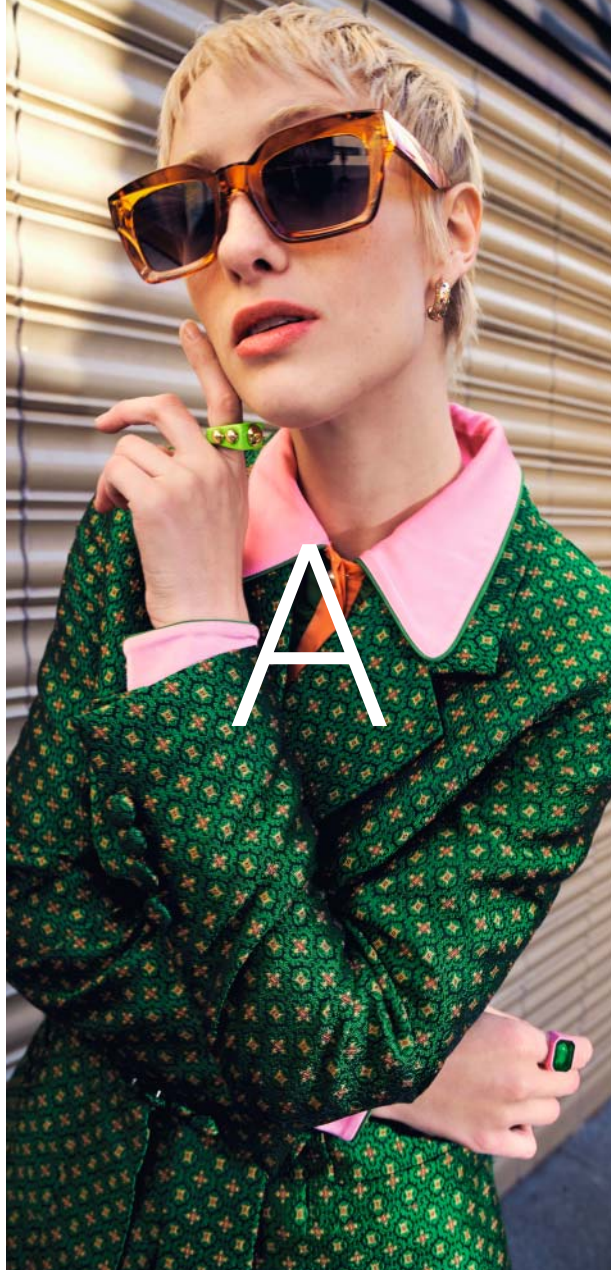




AYGO X



DRIVE TALL  
WHOEVER YOU ARE







## DRIVE TALL

Great things come in small packages. Aygo X is an unapologetically compact car bursting with attitude. It defies the norm, offering the confidence of a high-ride crossover, but with the exclusive features of a city car. A raised body, large alloy wheels and higher driving position bring the city up to your level. Don't just follow trends – create them. Look the city in the eyes, connect with the road and see the streets from a fresh perspective with new Aygo X.







## HOTTEST CROSSOVER IN TOWN

Turn up the heat across town with the bold and unmistakable design of Toyota Aygo X. Sophisticated, distinct and unquestionably cool, the bi-tone bodywork exudes originality and hints at a playful character. Striking 18" alloy wheels and oversized wheel arches give Aygo X a signature wider stance, projecting a confident presence. Let the eye-catching LED headlamps powerfully light your way wherever you go.







## DRIVEN BY IMPULSE

Innovations to let you take the city by storm. Highly responsive and controllable, Toyota Aygo X is the ultimate car for navigating modern urban spaces and beyond. With a higher driving position, you can enjoy the feeling of a high-ride without the worry. Only 3.7 metres long and boasting a class-leading turning radius, Aygo X is compact, agile and easy to park – even on busy inner streets. The responsive automatic gearbox reacts effortlessly to your driving style, and the smooth shifting make city driving easy and enjoyable.



## CITY PARKING JUST GOT SIMPLER

Confidently park anywhere in the city thanks to a rear-view camera and intelligent parking sensors.





X

## BLUE SKY DRIVING. FREE YOUR MIND

The open air represents total freedom. Open the cool canvas roof of Aygo X Air to truly connect with your city using your senses. Feel the warmth of the sun on your face, wind in your hair and enjoy the sights and sounds of bustling urban life around you. Let the light flood in and cruise the streets in style.







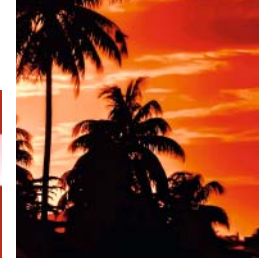
## WHAT'S YOUR SPICE?

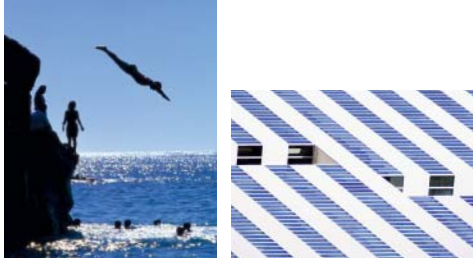
Spices embody the spirit of adventure. Every variety possesses unique qualities to energise the soul – from the sharp kick of chili to sophisticated notes of complex ginger. Available in a choice of five shades inspired by some of the world's favourite spices, the Toyota Aygo X infuses every drive with endless possibility.



## CHILI RED BOLD AND DARING

Audacious chili is the spice we turn to when we're feeling daring. Inspired by the unexpected hot hue of the fieriest spice, Aygo X in unapologetic Chili Red dares you to be different, makes you feel alive and inspires you to embrace the fun of the open road.





X

## JUNIPER BLUE COOL AND CREATIVE

Sharp, clear and bursting with vibrancy, juniper communicates a laser-driven focus. Aygo X in cool Juniper Blue clears the way for freedom of thought, encouraging creativity and a sense of optimism.







## GINGER BEIGE WARM AND DISTINCTIVE

However subtle, a hint of ginger can never be mistaken. Characterised by complexity, distinctive ginger has a unique ability to warm the spirit and spark the senses. The premium Ginger Beige Aygo X ignites a feeling of determination, giving you the confidence to drive your own way.







X

## TARRAGON GREEN FRESH AND YOUTHFUL

With its glossy leaves and earthy aromatics, Tarragon is a majestic herb. A perennial that grows back every year, its serene shade of green is fresh and forever youthful. Naturally energising and with an inner calm born of its connection with nature, Aygo X in Tarragon Green is beautiful and distinctive.



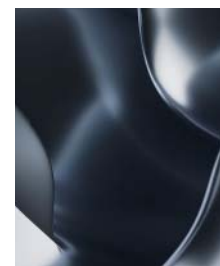




X

## PERSIAN SALT SOOTHING AND NATURAL

Pure and uncorrupted, Persian Salt is a rare and entirely natural product with an elemental, understated beauty. A soothing shade of luminous grey created by nature and the passing of time, it has the power to enhance your sense of wellbeing.







## INVITE THE CITY IN

Aygo X is designed with a wealth of human touches built to prompt easy interaction between driver and passengers. Interior highlights match the exterior spice colours to give a distinctive look to the cockpit, including the dashboard and centre consoles. Up close, the seats show the "X" symbol discreetly stitched right into the fabric. Spacious and comfortable, the intelligent cabin offers room for your entire day in the city. Thanks to increased width, this compact crossover has generous shoulder space in the front with exceptional visibility over the roads.





## IN SYNC WITH YOU AND YOUR CITY

More than a city car, Aygo X is an extension of your always-on lifestyle. Toyota Smart Connect seamlessly keeps your phone and car in sync, with wireless charging for constant on-the-go power. A large 10.5" HD touch screen displays everything you need – avoid city hold-ups using cloud navigation and real-time road events, while smart parking makes stopping a breeze. Use the MyToyota app to remotely manage door control and schedule cooling\* with a touch. Aygo X is like your smartphone on wheels.

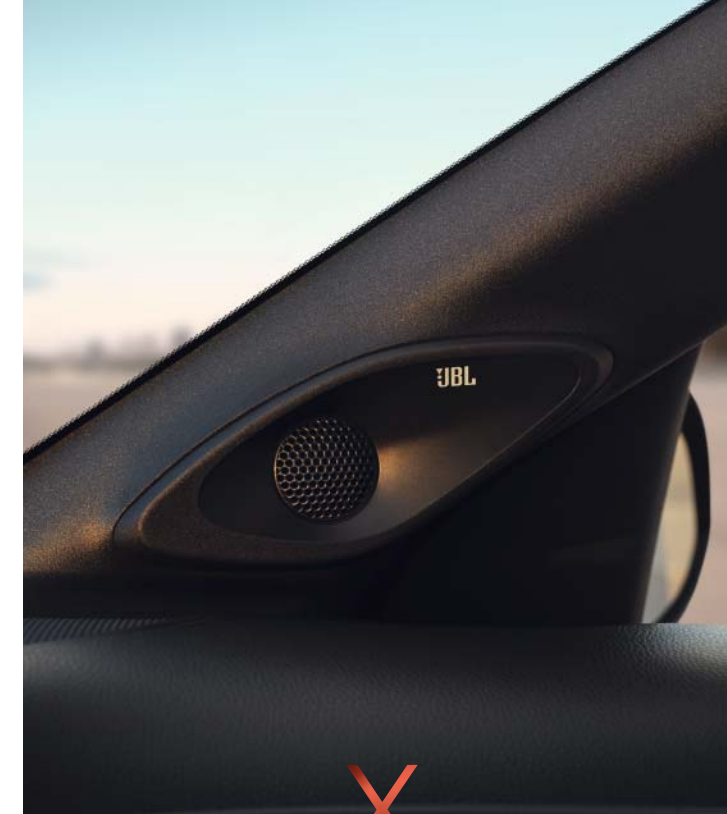


\* Available on models with CVT and Smart Entry.



## SOUNDTRACK YOUR JOURNEY

Soundtrack every drive with four premium JBL® speakers, a 300W amplifier and powerful subwoofer that have been precisely tuned to the interior of the Aygo X. Elevate every drive with amazing clarity and depth of sound.







## CAPACITY TO SURPRISE

Compact on the outside, but spacious on the inside, Aygo X is full of surprises. With up to 231 litres boot capacity, you'll find best-in-class boot space built for flexible lifestyles. Enjoy smart design for easy loading, with the ability to hold mid- and cabin-size luggage together. Your Aygo X has room for every day in the city and beyond.





## CONFIDENCE AT EVERY TURN

Stay focused and safe throughout the city. Aygo X is equipped with a wealth of enhanced safety features to ensure you're always confident on the roads. T-Mate combines Toyota Safety Sense\* with other active driving and parking-assistance technologies to keep you constantly in check. Whether on the motorway, in the city or parking – you're always in safe hands with Aygo X.

\* Standard on all grades.



### PRE-COLLISION SYSTEM (PCS)

When the possibility of a collision is detected, PCS alerts the driver with audio and visual warnings and brake assistance is activated. If the driver fails to brake in time, the brakes automatically engage to reduce the likelihood and severity of an impact. In addition, early detection of pedestrians (day or night) and cyclists (day only) is also possible. Intersection Turn Assist and Emergency Steering Assist, provide further driver support in the daytime by delivering greater safety when turning at junctions and enhanced steering assistance and stability when making evasive manoeuvres.

### LANE TRACE ASSIST

Designed to make motorway driving safer. It keeps you centred in your lane and if you start to drift, steering assist will gently steer your car to correct its course.

### ADAPTIVE CRUISE CONTROL

Keeps you at a minimum pre-set distance from the vehicle in front. If this distance falls, the system reduces your speed and eventually the brakes will be applied and brake lights activated. If your Aygo X is equipped with Road Sign Assist, it will also recognize speed limits on your driving route and suggest any necessary adjustments.





# X PLAY

The perfect combination for the city – a boldly styled exterior balanced with multimedia connectivity designed for modern lifestyles.



## TOP FEATURES

- 17" steel wheels
- 9" multimedia display
  - 4 speakers
- Rear-view camera

## OPTIONAL FEATURES

- 17" alloy wheels (5-double-spoke)
- Wireless charger







## PULSE

With the latest tech and proudly unique bi-tone colours, drive like everyone's watching.



### TOP FEATURES

- 17" machined-face alloy wheels (5-double-spoke)
- 9" multimedia display
- Front fog lamps (halogen)
- Privacy glass on rear side windows

### OPTIONAL FEATURES

- 10.5" multimedia display
- Wireless charger
- Canvas roof







ENVY

Be the envy of the town with a sophisticated design and wealth of premium and innovative features.



#### TOP FEATURES

- 18" bi-tone dark grey & machined-face alloy wheels (4-double-spoke)
- Projector LED headlamps
- 10.5" HD multimedia display
- Wireless mobile phone charger

#### OPTIONAL FEATURES

- JBL® Premium Sound System
- Heated driver & passenger seats
- Canvas roof







## CHILI EDITION

Dare to be different with unique and unapologetically bold Chili Red accents throughout.



### TOP FEATURES

- Available with Chili Red (3U4) and Juniper Blue (8Y8) bi-tone exterior paint colour
  - 18" matt black alloy wheels (4-triple-spoke) with Chili Red wheel insert
- Chili Red interior and exterior accents and gunmetal interior decorations
  - Black fabric with Chili Red stitching and leather side bolsters
  - 10.5" HD multimedia display







## GINGER EDITION

Have the confidence to drive your own way with unmistakably premium Ginger Beige accents.



### TOP FEATURES

- Available with Ginger Beige (4U9) bi-tone exterior paint colour
- 18" matt black alloy wheels (4-triple-spoke) with Ginger Beige wheel insert
- Ginger beige interior and exterior accents and gunmetal interior decorations
  - Black fabric with Ginger stitching and leather side bolsters
  - 10.5" HD multimedia display





# X

## PIANO BLACK EDITION

Add a hint of sophistication with sleek piano black accents.



### TOP FEATURES

- Available with Persian Salt (1K3) and Tarragon Green (6X3) bi-tone exterior paint colour
  - 18" piano black alloy wheels (4-triple-spoke)
- Piano black interior and exterior accents and gunmetal interior decorations
  - Black fabric with body-coloured stitching and leather side bolsters
  - 10.5" HD multimedia display





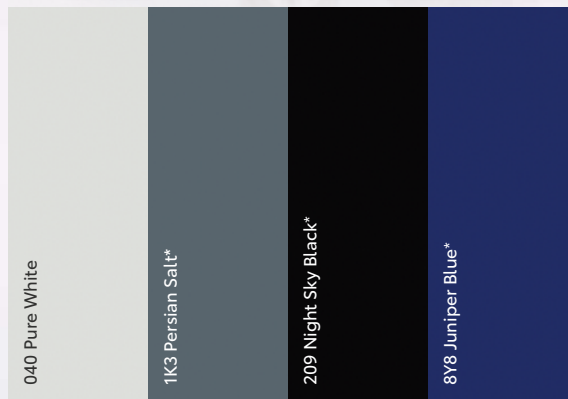


## CONFIDENT COLOURS

Available in a choice of 10 colours, Toyota Aygo X is tailor-made to your tastes.



Monotone colour choices



Bi-tone colour choices



\* Metallic paint.

‡ Pearlescent paint.







## CHROME PACK ACCESSORIES

The Chrome Pack draws out subtle, sophisticated highlights of Aygo X's unmistakable exterior.



### FRONT BUMPER GARNISH

This distinctive chrome garnish gives the front bumper and grille extra definition and a refined look.

### SIDE SILLS

Highlight the aerodynamic contours of your Aygo X with a touch of perfectly integrated chrome.

### REAR LOWER BOOT GARNISH

A flash of chrome at the lower edge of the boot adds a final touch of style.

Displayed with accessory wheels;  
18" alloy wheels – matt black.

Displayed with accessory wheels;  
18" alloy wheels – machined-face black.



## RED PACK ACCESSORIES

The Red Pack is distinctive and confident. It's the ideal way to emphasise Aygo X's refined style.



### FRONT BUMPER GARNISH

Make a subtly powerful statement by adding this stylish red garnish to your Aygo X's front bumper.

### SIDE SILLS

This touch of red underscores the contours of your Aygo X, and integrates seamlessly.

### REAR LOWER BOOT GARNISH

A subtle signature for your Aygo X's boot, conveying a sense of sportiness.

### MIRROR COVERS

Red-accented mirror covers emphasise the unique character of Aygo X, helping it stand out on the road.

Displayed with accessory wheels;  
17" alloy wheels – glossy black.

Displayed with accessory wheels;  
18" alloy wheels – glossy machined-face black.





## PROTECTION PACK

Your Aygo X is a striking city car and you'll want to keep it that way. The Protection Pack helps avoid damage from low speed collisions and protects your car against parking scrapes.



### SIDE MOULDING

Offering an extra layer of protection for your Aygo X, guard the side panels with side moulding.

### MUD FLAPS

Keep your Aygo X looking fresh with mud flaps for both front and rear wheel arches.



## ACCESSORIES



Chili Red decoration sticker set side & rear

### STICKER SETS

Emphasise your car's powerful contours with side & rear and roof & bonnet sticker sets in bold Chili Red



Chili Red decoration sticker set roof & bonnet



### REAR BUMPER PROTECTION FILM

Reliable protection to prevent minor scratching of the paintwork around your car's rear bumper when unloading the boot. Made of tough transparent self-adhesive film, the film is shaped for an exact fit.



### BOOT LINER

This anti-slip boot liner seamlessly fits your Aygo X, shielding it from dirt, spills or muddy paws.



### DASHCAM

A dashcam offers protection and back-up to you and your family on the road. It can offer a record/video evidence in the event of an accident and advocate for your driving when faced with false or unfair liability claims.



### CARGO NET

Strong, woven, black nylon net with two compartments for holding small items securely in your car's boot area.

For the full range of accessories, please visit the Toyota website.



SPECIFICATIONS

ENVIRONMENTAL PERFORMANCE		
	<div>Petrol</div> 1.0 l VVT-i Petrol 5 M/T	<div>Petrol</div> 1.0 l VVT-i Petrol S-CVT
Fuel consumption (applicable legislation)		
Combined speeds (l/100km)	4.8-5.0	4.9-5.2
Low speed (l/100km)	5.4	5.6-5.7
Medium speed (l/100km)	4.4-4.5	4.5-4.6
High speed (l/100km)	4.1-4.4	4.1-4.4
Extra high speed (l/100km)	5.3-5.8	5.6-6.0
Recommended fuel grade	95 or more (octane)	95 or more (octane)
Fuel tank capacity (litres)	35	35
Carbon dioxide, CO <sub>2</sub> (applicable legislation)		
Combined speeds (g/km)	108-114	112-117
Low speed (g/km)	121-122	127-129
Medium speed (g/km)	99-103	101-104
High speed (g/km)	94-99	94-99
Extra high speed (g/km)	121-131	128-136
Exhaust emissions (regulation EC 715/2007 as amended by EC 2018/1832AP)		
Euro class	EURO 6 AP	EURO 6 AP
Carbon monoxide, CO (mg/km)	245.6	336.7
Hydrocarbons, THC (mg/km)	22.0	29.7
Hydrocarbons, NMHC (mg/km)	19.3	26.6
Nitrogen Oxides, NOx (mg/km)	16.7	9.8
Sound level drive by (dB(A))	67.0	69.0

The fuel consumption and CO<sub>2</sub> values are measured in a controlled environment on a representative production model, in accordance with the requirements of the new WLTP European Regulation EC 2017/1151 and its applicable amendments. For each individual vehicle configuration, the final fuel consumption and CO<sub>2</sub> values may be calculated based on the ordered optional equipment. The fuel consumption and CO<sub>2</sub> values of your vehicle may vary from those measured or calculated values, as driving behaviour as well as other factors (such as road conditions, traffic, vehicle condition, tyre pressure, load, number of passengers, etc.) have an influence on a car's fuel consumption and CO<sub>2</sub> emissions. For more information regarding the new WLTP test method, please visit: <https://www.toyota-europe.com/world-of-toyota/feel/environment/worldwide-harmonized-light>

ENGINE		
	<div>Petrol</div> 1.0 l VVT-i Petrol 5 M/T	<div>Petrol</div> 1.0 l VVT-i Petrol S-CVT
Engine code	1KR-FE	1KR-FE
Number of cylinders	3 cylinder, in line	3 cylinder, in line
Valve mechanism	DOHC four-valve direct compression (with VVT)	DOHC four-valve direct compression (with VVT)
Fuel system	Direct multipoint injection	Direct multipoint injection
Displacement (cc)	998	998
Bore x stroke (mm x mm)	71.0 x 84.0	71.0 x 84.0
Compression ratio	11.8:1	11.8:1
Maximum power output (DIN hp)	72	72
Maximum power output (kW/rpm)	53/6000	53/6000
Maximum torque (Nm/rpm)	93/4400	93/4400

PERFORMANCE		
Maximum speed (km/h)	158	151
0-100 km/h (secs)	14.9	14.8
Drag coefficient	0.32	0.32

M/T = Manual transmission  
S-CVT = Multidrive S



SPECIFICATIONS

SUSPENSION	Petrol	Petrol
	1.0 l VVT-i Petrol 5 M/T	1.0 l VVT-i Petrol S-CVT
	Front	MacPherson Strut
	Rear	Torsion Beam

BRAKES		
Front	Ventilated disc 1-cylinder	Ventilated disc 1-cylinder
Rear	Drum	Drum

WEIGHTS & TOWING CAPACITY		
Total gross vehicle mass (kg)	1360	1360
Kerb weight (kg)	940-995	965-1015
Towing capacity with brakes (kg)	0*	0*
Towing capacity without brakes (kg)	0*	0*

\* 50 kg towing capacity for bicycles.

EXTERIOR DIMENSIONS	5-door (4-seat)
Exterior length (mm)	3700
Exterior width (mm)	1740
Exterior height (mm)	1525
Front tread (mm)	1540
Rear tread (mm)	1520
Front overhang (mm)	730
Rear overhang (mm)	540
Wheelbase (mm)	2430

INTERIOR DIMENSIONS	5-door (4-seat)
Interior width (mm)	1420
Interior height (mm)	1205

STEERING	
Turning circle - tyre (m)	9.4

OFF ROAD	
Min running ground clearance (mm)	146

LOAD VOLUME	5-door (4-seat)
Luggage capacity (4 seats up; up to belt line) (litres)	231
Luggage capacity (2 seats up; up to roof) (litres)	829
Luggage compartment length (4 seats up) (mm)	512
Luggage overall width (mm)	1190
Luggage overall height (mm)	1009
Luggage compartment length (2 seats up) (mm)	1182
Luggage compartment height (up to tonneau cover) (mm)	708
VDA luggage capacity, up to tonneau cover, rear seat up (litres)	231



**ALL NEW**  
TOYOTA AYGO X





# TOYOTA ENVIRONMENTAL CHALLENGE 2050



At Toyota, we want to go beyond zero environmental impact and leave the world in a better place than we found it. To make that happen, we have set ourselves six challenges to complete by 2050. Each one presents its own difficulties, but we are committed to generating a positive and sustainable impact on society and the natural world as a whole.

## CO<sub>2</sub> 0 CHALLENGE 1 NEW VEHICLE – ZERO CO<sub>2</sub> EMISSIONS

By 2050, we want to reduce the CO<sub>2</sub> emissions from our vehicles by 90% compared to our 2010 levels. To achieve this, we will promote the development of new vehicles with low or zero carbon emissions, and do everything we can to increase the uptake of these vehicles.

## CO<sub>2</sub> 0 CHALLENGE 3 PLANT ZERO CO<sub>2</sub> EMISSIONS

To reduce carbon emissions at our manufacturing plants, we are focusing on improving the technologies we use and switching to alternative power sources. We are committed to making our facilities more energy-efficient and adopting renewable energy sources such as solar and wind, as well as low-carbon power such as hydrogen energy.

## CHALLENGE 5 ESTABLISHING A RECYCLING-BASED SOCIETY AND SYSTEMS

We've been working on the challenge of resource recycling for 40 years, with the result that 95% of every Toyota Aygo X is now reusable and recoverable. In addition, we offer new and innovative ways of returning your vehicle when it eventually reaches 'the end of the road'.



\* Toyota's LCA methodology, which is applied to our passenger vehicles, was reviewed and approved by TÜV Rheinland and has been certified to comply with ISO14040/14044 standards.

## CO<sub>2</sub> 0 CHALLENGE 2 LIFE CYCLE ZERO CO<sub>2</sub> EMISSIONS

We are working to create more environmentally friendly designs – and then analysing and refining them to ensure the lowest possible environmental impact throughout the vehicle's entire life cycle\*.

## CHALLENGE 4 MINIMISING AND OPTIMISING WATER USAGE

To minimise water usage, we have started to collect rainwater at our manufacturing plants. We have also developed purification methods so that the water we do use can either be used again or returned safely into the local supply.

## CHALLENGE 6 ESTABLISHING A FUTURE SOCIETY IN HARMONY WITH NATURE

To preserve and enhance our co-existence with the natural world, we are organising reforestation and tree planting, green urban schemes and other environmental initiatives, both at our own sites and in the wider world. Our aim is to establish a society where people and nature coexist in harmony.







## YOUR COMPLETE PEACE OF MIND WITH TOYOTA

### QUALITY SERVICE

Your Toyota will need a Health & Safety check at least once every 2 years/30,000 km (whichever comes sooner). An intermediate check is necessary every year or 15,000 km.

### LOW MAINTENANCE COSTS

All Toyota vehicles are designed and engineered to minimise your maintenance costs.

### GENUINE PARTS

Providing the reassurance of Toyota quality, only genuine and approved components are used on your vehicle.

### COMPREHENSIVE WARRANTY

Every new Toyota comes with a 3-year/100,000 km vehicle warranty\*, which covers any defect caused by a manufacturing fault<sup>§</sup>.

### ADDED SECURITY

Toyota's comprehensive security system withstands the insurance industry's rigorous 5-minute attack test.

### TOYOTA EUROCARE

Enjoy peace of mind driving with complimentary Toyota Eurocare roadside assistance in 40 European countries for 3 years<sup>§</sup>.

### GENUINE ACCESSORIES

Toyota accessories are designed and manufactured with the same care, quality and attention to detail as Toyota vehicles. All accessories are covered by a 3-year warranty when purchased together with the vehicle\*.

For more information on peace of mind visit: [www.toyota-europe.com/service-and-accessories](http://www.toyota-europe.com/service-and-accessories)

\* Check with your retailer for specific warranty details. <sup>§</sup>Transport to the nearest authorised Toyota repairer will also be covered. In addition the 3-year/unlimited mileage paint warranty protects against defects and surface rust caused by a manufacturing fault. Every new Toyota is covered by a 12-year anti-corrosion (not valid for commercial vehicles) warranty against perforation of body panels caused by a manufacturing fault in materials or workmanship. <sup>§</sup> Belgium 5 years/Portugal and Denmark 1 year.





# TOYOTA AYGO X DRIVE TALL

[www.toyota.com.cy](http://www.toyota.com.cy)

To the best of our knowledge, all information in this brochure is correct at time of going to print. Details of specifications and equipment provided in this brochure are subject to local conditions and requirements and may, therefore, vary from models available in your area. Please enquire with your local retailer for details on your local specifications and equipment. • Vehicle body colours may differ slightly from the printed photographs in this brochure. • The readability of QR Codes® present in this brochure may differ according to the scanner used. Toyota cannot be held responsible should your device not be able to read any QR Codes® or interactive content markers. • Toyota Motor Europe reserves the right to alter any details of specifications and equipment without prior notice. • © 2025 by Toyota Motor Europe NV/SA ("TME"). • No part of this publication may in any way be reproduced without the prior written approval of Toyota Motor Europe.